



Old Ford Road, London, E3

BUTLER & STAG



Guide Price £900,000 - £950,000
Discover this beautifully restored two-storey Victorian home, offering over 1,100 sq/ft of thoughtfully designed living space. Nestled on the doorstep of the award winning Victoria Park, this three-bedroom residence seamlessly blends classic charm with modern elegance.



Freehold

- Two Storey Victorian House
- Rear Garden
- Down Stairs Toilet
- Stylish First Floor Bathroom
- 1,102 Sq/Ft Internal Living Space
- Three Beautifully Sized Bedrooms
- Engineered Oak Flooring / Column Radiators / Bespoke Wooden Paneling
- The Award Winning Victoria Park Is A Moments Walk Away

Step inside to find a light-filled interior featuring high ceilings, bespoke wooden paneling, column radiators and a stylish, contemporary finish.

Spread across two levels, this expansive residence boasts generously proportioned living spaces, including a double through reception room, a large kitchen dining area, leading to a tranquil designed garden.

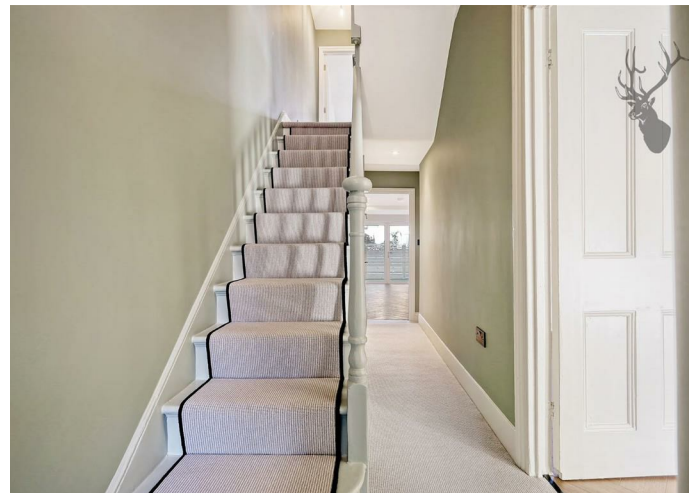
The fully renovated kitchen features premium stainless steel appliances, bespoke cabinetry, and ample work space.

Step outside to discover a beautifully landscaped garden, where smart decking provides an idyllic setting for al fresco dining.

Upstairs, three well-appointed bedrooms offer comfort and tranquility, with a bathroom featuring luxurious finishes. Every inch of this home has been meticulously updated, ensuring turnkey convenience.

With its unbeatable location just steps from the vibrant green spaces, trails, and cultural amenities of Victoria Park, this exceptional home is a rare find. .

Excellent transport links are nearby, including several bus routes into the City, whilst Hackney Wick train station is within walking distance.





Old Ford Road

Approx. Gross Internal Area 102.5 Sq M (1102.8 Sq Ft)

BUTLER & STAG



Measurements are approximate and for illustration purposes only. While we do not doubt the accuracy and completeness, we advise you conduct a careful independent assessment of the property to determine monetary value.
© @modephoto.uk www.modephoto.co.uk

BUTLER & STAG

☎ 020 8102 1236

🏠 508 Roman Road, Bow, London, E3 5LU

✉ bow@butlerandstag.com

www.butlerandstag.uk

IMPORTANT NOTICE - These particulars have been prepared in good faith and they are not intended to constitute part of an offer or contract. We have not performed a structural survey on this property and the services, appliances and specific fittings have not been tested. All photographs, measurements, floor plans and distances referred to are given as a guide and should not be relied upon.